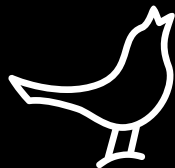


LIBRATONE **ZIPP**

OWNER'S MANUAL



For manuals in other languages please visit www.libratone.com/manual

4	FullRoom™
5	AirPlay / PlayDirect™
6	Introduction
8	Quick AirPlay Setup (Wi-Fi)
10	Music on the go - PlayDirect
12	Setup AirPlay - iPhone, iPad or iPod touch (Wi-Fi)
20	Setup AirPlay - Mac/PC (Wi-Fi)
28	DLNA - Android or Windows
29	Libratone app
30	Factory reset
31	Battery charging
32	Cover change
33	Troubleshooting / Register / Warranty
34	Speaker specs

CONGRATULATIONS!

YOU HAVE TAKEN A LEAP OF FAITH. A step towards a world of wireless bliss. It takes a great deal of courage to liberate yourself from the shackles of speaker cables and ordinary stereo systems. But you have jumped right into it. **FOR THIS WE SALUTE YOU.**

We have done everything in our power to make your Libratone sound system as simple and user friendly as possible. Hopefully this manual will answer any questions you might have.

Thank you for buying our product. Thank you for joining the revolution.

FULLROOM™



Libratone Zipp is based on a patent-pending audio technology. We call it FullRoom™ sound. Allow us to explain:

Regular speakers have closed cabinets. They push the sound waves in one direction - forward. Libratone Zipp, on the other hand, plays like an acoustic instrument, dispersing sound waves in multiple directions giving you a 360° sound experience.

Libratone Zipp has no front or back. This means that wherever the speaker is placed, the round shape assists the stereo sound and encapsulates everyone around in sound. We call it the **social speaker**.

MUSIC AT HOME

 AIRPLAY

AirPlay is a technology designed by Apple to transmit audio and video instantly from source to source within a Wi-Fi network. Once AirPlay is installed, you can stream from iTunes - both on Mac and PC - or you can use your iOS devices: iPad, iPhone or iPod touch. This means that you have your entire music and movie library in the palm of your hand, ready to be set free.

MUSIC ON THE GO

 PlayDirect

Libratone PlayDirect™ is AirPlay to go. It allows you to stream your music wirelessly in non-Wi-Fi areas from PC/Mac or your iOS devices: iPad, iPhone or iPod touch. Libratone PlayDirect™ technology creates a direct network connection between your speaker and music device making Libratone Zipp the ideal portable speaker anywhere you go.

INTRODUCTION

**Logo Button**

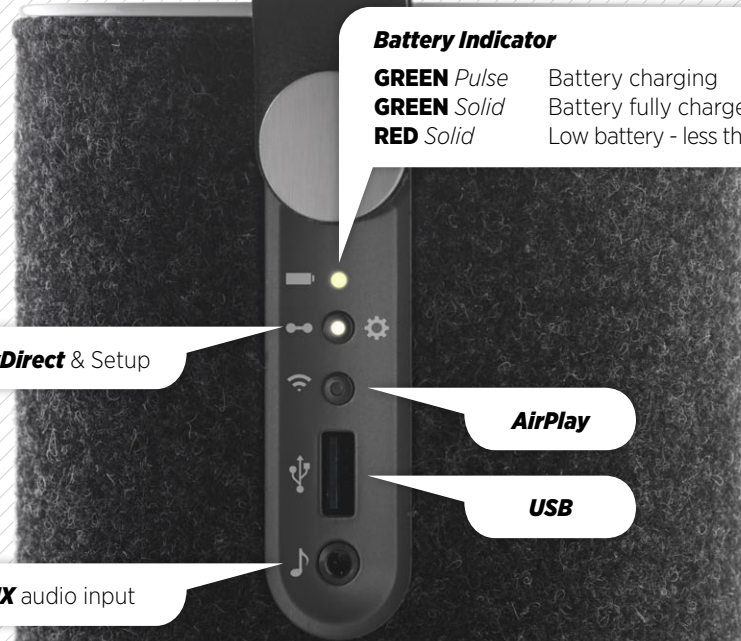
Mute or **Wake Me Up** *Press*
Standby / Power off *Hold*

Volume Up/Down**Status Indicator**

WHITE *Breathing* I'm OK - Just sleeping
WHITE *Solid* I'm playing (AirPlay, PlayDirect, DLNA, USB or AUX)
YELLOW *Pulse* Booting - Updating
RED *Pulse* Help me (Network problem / Very low battery)

PlayDirect & Setup**Battery Indicator**

GREEN *Pulse* Battery charging
GREEN *Solid* Battery fully charged
RED *Solid* Low battery - less than 10%

AirPlay**USB****AUX** audio input



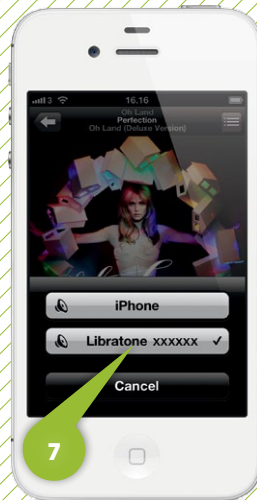
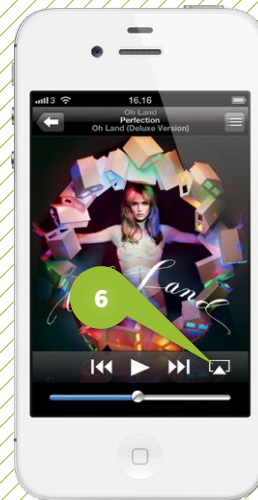
SETUP AIRPLAY WITH USB CABLE

- Press the Libratone **“Logo Button”** to turn it on.
- Connect your iOS device (iOS 5 or later) and Libratone Zipp with a USB cable.
- Press and hold the **“PlayDirect”** button until **“Share Wi-Fi Settings”** pops up.
- Press **“Allow”** on your device and wait for Libratone Zipp to reboot.



SET YOUR MUSIC FREE

- Select **“Music”** on your iPhone, iPad or iPod touch and press the **“AirPlay”** icon.
- Choose your speaker.
- Select **“Play”** and set your music free.



MUSIC ON THE GO - PLAYDIRECT

- Press the Libratone **“Logo Button”** to turn it on.
- Press the **“PlayDirect”** button and wait until the **“Status Indicator”** starts breathing WHITE.
- Open **“Settings”** and press **“Wi-Fi”** connections on your iPhone.
- Choose the **“Libratone”** network.

SET YOUR MUSIC FREE

- Select **“Music”** on your iPhone, iPad or iPod touch and press the **“AirPlay”** icon.
- Choose your speaker.
- Select **“Play”** and set your music free.



LIBRATONE APP

Download the **“Libratone”** app from Apple’s App Store.



TURN ON YOUR LIBRATONE ZIPP

- Press the Libratone **“Logo Button”** to turn it on.

 *Make sure your home Wi-Fi is up and running and within range of both your speaker and iPhone.*



PUT YOUR SPEAKER IN SETUP MODE

- Press the **“PlayDirect”** button and wait until the **“Status Indicator”** starts breathing WHITE.



FIND YOUR SPEAKER

- Open **“Settings”** and press **“Wi-Fi”** connections on your iPhone.
- Choose the **“Libratone”** network.



SETUP YOUR LIBRATONE ZIPP

- Open "**Libratone**" app, "**Select Speaker**" and press "**Setup**"
- Type in: **Speaker name**
- Press "**Wi-Fi Network**", select your **Home Wi-Fi network** and enter **Password** (if needed)
- Click "**Apply Settings**".



RE-CONNECT TO YOUR HOME NETWORK

- Open "**Settings**" and press "**Wi-Fi**" connections on your iPhone.
- Choose your **Home Wi-Fi network**.

Your iPhone may do this automatically.



Status Indicator

YOUR SPEAKER IS READY!

If the **"Status Indicator"** is breathing WHITE you're alright! And you're ready for AirPlay.

If it's not, go to page 14 and start over or visit: www.libratone.com/faq for support.



SET YOUR MUSIC FREE

- Select **"Music"** on your iPhone, iPad or iPod touch.
- Select **"AirPlay"** icon.
- Choose your speaker.
- Select **"Play"** and set your music free.

A close-up photograph of the top surface of a white Libratone Zipp speaker. The central feature is a circular logo button with a bird icon and a small white LED indicator light below it. A blue callout bubble points to the button.

Logo Button

TURN ON YOUR LIBRATONE ZIPP

- Press the Libratone **“Logo Button”** to turn it on.

 *Make sure your home Wi-Fi is up and running and within range of both your speaker and Mac/PC.*

A close-up photograph of the side panel of a black Libratone Zipp speaker. The panel features a white PlayDirect button, a status indicator light, and various ports. A blue callout bubble points to the PlayDirect button.

Status Indicator

PlayDirect & Setup

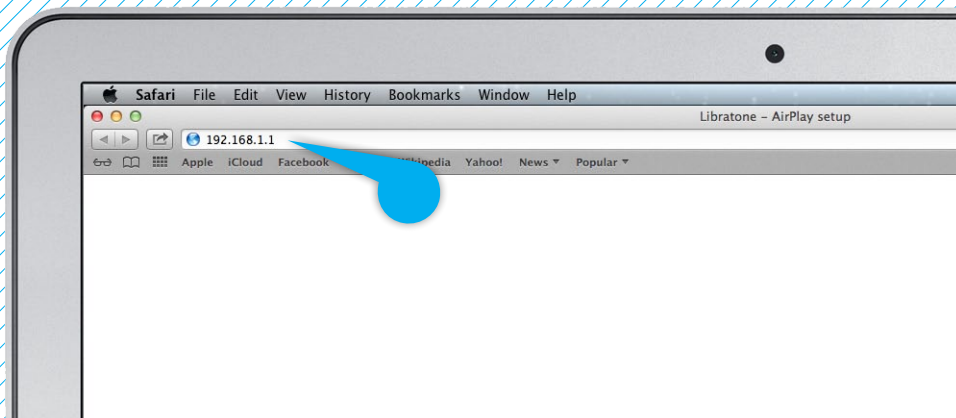
PUT YOUR SPEAKER IN SETUP MODE

- Press the **“PlayDirect”** button and wait until the **“Status Indicator”** starts breathing WHITE.



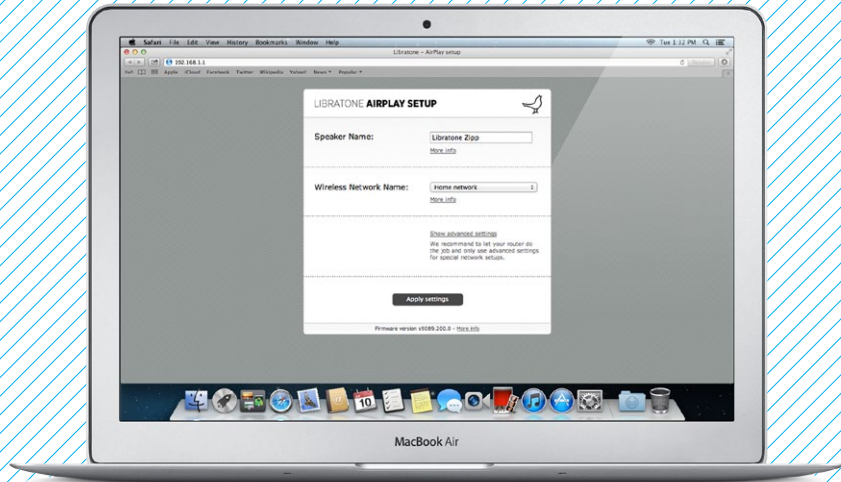
FIND YOUR LIBRATONE ZIPP NETWORK

- Open **“Wi-Fi”** connections on your Mac/PC.
- Choose the **“Libratone”** network.



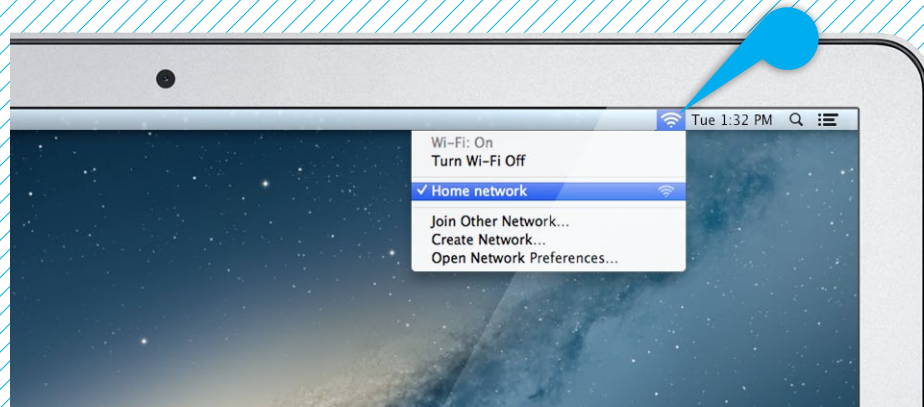
ENTER YOUR SPEAKER SETUP PAGE

- Open your browser.
- Type **192.168.1.1** in the browser and press **“ENTER”**.



SETUP YOUR SPEAKER

- Type in: **Speaker name**, your **Home Wi-Fi network** and **Password** (if needed).
- Click **“Apply settings”**.



CONNECT TO YOUR HOME NETWORK

- Open **“Wi-Fi”** connections on your Mac/PC.
- Choose your **Home Wi-Fi network**.

Your Mac/PC may do this automatically.

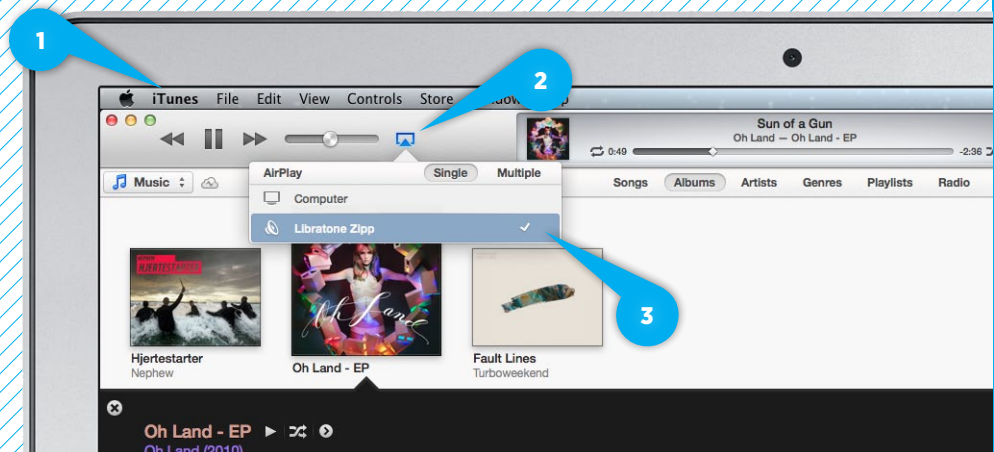


Status Indicator

YOUR SPEAKER IS READY!

If the **"Status Indicator"** is breathing WHITE you're alright! And you're ready for AirPlay.

If it's not, go to Page 21 and start over or visit: www.libratone.com/faq for support.



SET YOUR MUSIC FREE

- Open **"iTunes"** on your Mac/PC.
- Click **"AirPlay"** icon and choose your speaker.
- Select **"Play"** and set your music free.



DLNA

Built-in DLNA technology allows you to stream music to your Libratone speaker from most devices using Android, Windows 7 or Windows 8.

For more info go to www.libratone.com/dlna

LIBRATONE APP



Add another dimension to your Libratone Zipp by downloading the free Libratone app from Apple App Store to your iOS device.

The Libratone app keeps your speaker firmware up to date and allows you to customize the sound to your music style and acoustic surroundings - and thereby enhancing the FullRoom experience.




 Logo Button

Status Indicator

PlayDirect & Setup

AirPlay

FACTORY RESET

To clear all speaker settings on your Libratone Zipp you need to perform a factory reset.

- Press and hold the **“PlayDirect”**, **“AirPlay”** and the **“Logo Button”** simultaneously until the **“Status Indicator”** starts to pulse yellow, then release buttons.
- When the **“Status Indicator”** starts pulsing white, your speaker is reset to factory settings.



BATTERY CHARGING

Connect the power adapter into a working electrical outlet. Plug-in the other end of the power adapter into the bottom of your Libratone Zipp speaker. The **“Battery Indicator”** starts pulsing green. Leave it connected to mains until the **“Battery Indicator”** light turns solid green, which indicates that it is fully charged. A full charge takes approximately 1½-2 hours.

COVER CHANGE

Gone are black speaker boxes! Libratone Zipp comes in all colors of the rainbow. Can't decide on a color? Don't worry! The wool covers are sold separately and can be changed instantly.

When changing the speaker cover on Libratone Zipp: **“Gentle is the name of the game”**.

- Place the speaker on your lap and unzip the cover.
- Turn the handle upwards.
- Gently pull down the cover around the connector panel towards the speaker bottom.
- Gently unhook the cover from the bottom of the connector panel.
- Loosen the cover from the top of the connector panel.
- Remove the wool cover from the speaker by leading the handle through the hole.

To dress the speaker again, follow the above steps backwards.

TROUBLESHOOTING

Our hearts and souls are in your Libratone Zipp. However, if it's acting up and you can't find your answer here, please visit our support page at:

www.libratone.com/support

REGISTER

To help us give you the best service possible, we encourage you to register your product at:

www.libratone.com/register

WARRANTY

Don't worry. Your Libratone Zipp is covered by our warranty. Since the warranty follows national laws, it differs from country to country. For warranty information regarding your country please visit:

www.libratone.com/warranty

Warranty information is occasionally printed on your invoice as well.

TECHNOLOGY

Wireless active speaker with built-in Digital Signal Processing and Digital Amplification. Implements Libratone patent pending FullRoom™ acoustic technology for exceptional sound performance.

WIRELESS

AirPlay lets you stream audio wirelessly from your iPad (3rd generation), iPad 2, iPad, iPhone 4S, iPhone 4, iPhone 3GS, iPod touch (4th and 3rd generations) with iOS 4.3.3 and iTunes 10.2.2 (Mac and PC) or later.

INPUTS

AirPlay, PlayDirect, DLNA, USB audio (iPod, iPhone and iPad) and 3.5 mm audio minijack for analog sound.

DRIVE UNITS

1x4" bass and 2x1" ribbon based tweeter.

AMPLIFIER

60W total. 2.1 Stereo system with FullRoom DSP optimization and Full Digital Amplification.

ACOUSTIC PERFORMANCE

Frequency range: 60-20.000 Hz.
Max. output: 96 dB SPL/ 1m.

POWER

110-230 Volt AC, 50/60Hz.
Power consumption 40W external charger.

BATTERY PLAYING TIME

Up to 8 hours wired, up to 4 hours wireless.

DIMENSIONS

H: 26.0 cm. Ø: 12.2 cm
H: 10.2 inch. Ø: 4.8 inch

WEIGHT

1,8 kg. / 4 pounds.

THIS IS IT!
TIME TO SET YOUR
MUSIC FREE
WE WISH YOU
GODSPEED



AirPlay, the AirPlay logo, iPad, iPhone, iPod and iPod touch are trademarks of Apple Inc., registered in the U.S. and other countries. Libratone and FullRoom are registered trademarks of Libratone A/S.

LIBERTY
LIBRATONE

DIFFERENT SPELLING. SAME MEANING.