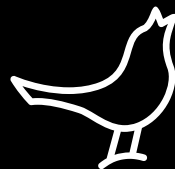


LIBRATONE **LIVE**
LOUNGE
OWNER'S MANUAL



For manuals in other languages please visit www.libratone.com/manual

4	FullRoom™
5	AirPlay / PlayDirect™
6	Placement
8	Button Functions
9	Status Indicator
10	Setup AirPlay - iPhone, iPad or iPod touch (Wi-Fi)
17	Music on the go - PlayDirect
20	Setup AirPlay - Mac (Wi-Fi)
27	DLNA - Android or Windows
28	Setup AirPlay - PC (Wi-Fi)
29	Libratone App
30	Factory Reset
31	Connect AUX
32	Cleaning / Cover Change
33	Troubleshooting / Register / Warranty
34	Speaker Specs

CONGRATULATIONS!

YOU HAVE TAKEN A LEAP OF FAITH. A step towards a world of wireless bliss. It takes a great deal of courage to liberate yourself from the shackles of speaker cables and ordinary stereo systems. But you have jumped right into it. **FOR THIS WE SALUTE YOU.**

We have done everything in our power to make your Libratone sound system as simple and user friendly as possible. Hopefully this manual will answer any questions you might have.

Thank you for buying our product. Thank you for joining the revolution.

FULLROOM™



Libratone speakers are based on a patent-pending audio technology. We call it FullRoom™ sound. Allow us to explain:

Regular speakers have closed cabinets. They push the sound waves in one direction - forward. Libratone Live and Libratone Lounge, on the other hand, plays like an acoustic instrument, dispersing sound waves in multiple directions giving you a 360° sound experience.

FullRoom technology means that you only need one sound source to get a room full of sound.

MUSIC AT HOME

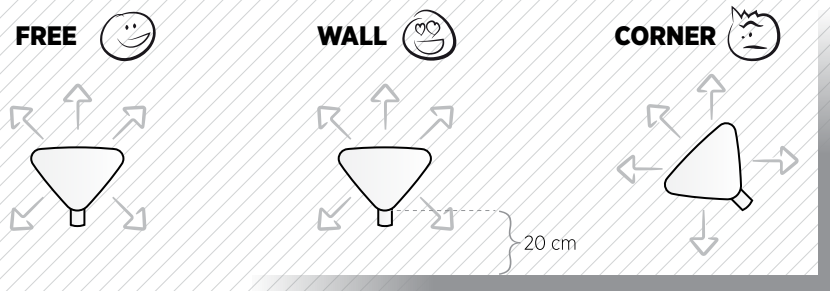


AirPlay is a technology designed by Apple to transmit audio and video instantly from source to source within a Wi-Fi network. Once AirPlay is installed, you can stream from iTunes - both on Mac and PC - or you can use your iOS devices: iPad, iPhone or iPod touch. This means that you have your entire music and movie library in the palm of your hand, ready to be set free.

MUSIC ON THE GO



Libratone PlayDirect™ is AirPlay to go. It allows you to stream your music wirelessly in non-Wi-Fi areas from PC/Mac or your iOS devices: iPad, iPhone or iPod touch. Libratone PlayDirect™ technology creates a direct network connection between your speaker and music device.

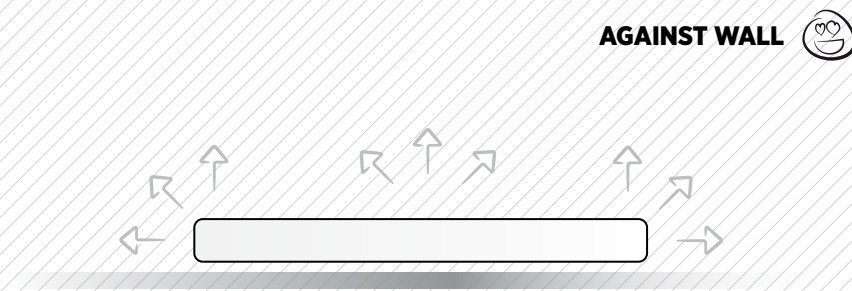


LIVE PLACEMENT

Thanks to our FullRoom technology a speaker from Libratone is very versatile when it comes to placement. Still, we would like to give you our advice:

If you place Libratone Live against a hard backdrop with about 20cm/8 inches of air, the sound will reflect off the wall. This gives you a deeper bass and an even fuller soundscape. This in mind, we don't recommend you place Libratone Live in a corner but it's up to you.

To optimize and customize your Libratone sound experience we recommend you download the Libratone app.



LOUNGE PLACEMENT

Thanks to our FullRoom technology a speaker from Libratone could be placed just about anywhere. Still, a piece of good advice won't hurt:

To create the best sound conditions Libratone Lounge should be placed against a hard backdrop. Whether you hang it on the wall, place it on a shelf or put it on the ground won't change the sound.

If you want to use Libratone Lounge for TV-sound, we recommend you place the TV and speaker together to get the best stereo effect and the optimal FullRoom conditions.

BUTTON FUNCTIONS

PRESS

Mute or Wake Me Up

DOUBLE PRESS

Toggle PlayDirect/Setup or AirPlay

PRESS & HOLD

Set speaker in Standby mode



LIBRATONE

STATUS INDICATOR

WHITE *Breathing*

I'm OK - Just sleeping

WHITE *Sequence*

I'm OK - Ready for PlayDirect and in Setup Mode

WHITE *Solid*

I'm playing
(AirPlay, PlayDirect, DLNA or AUX)

YELLOW *Pulse*

Booting - Updating

RED *Pulse*

Help Me (Network problem)

RED *Solid*

Standby



LIBRATONE



LIBRATONE APP

- Download the **“Libratone”** app from Apple’s App Store.

 *Make sure your home Wi-Fi is up and running and within range of both your speaker and iPhone.*



PUT YOUR SPEAKER IN SETUP MODE

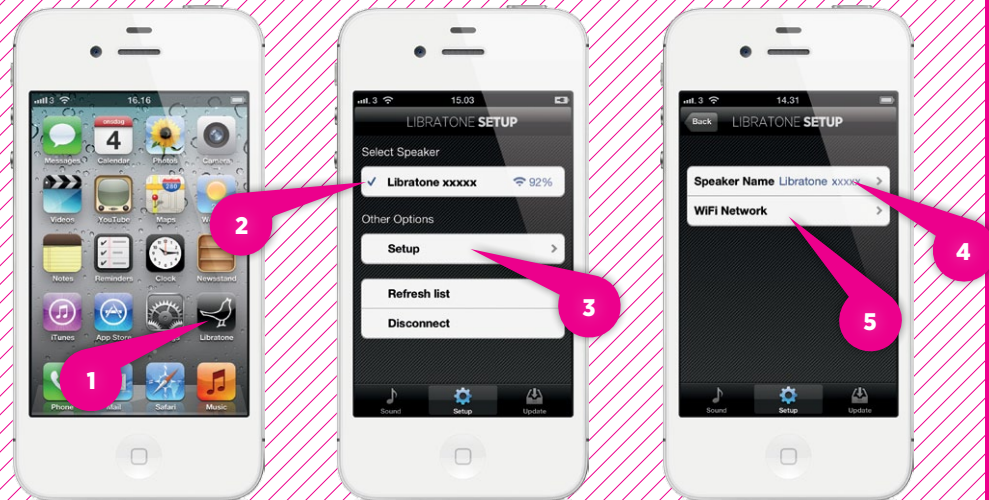
- Turn on your speaker and **wait 30 sec.** while the **“Logo Button”** is pulsing YELLOW.
- When the **“Logo Button”** emits the WHITE setup sequence, it’s ready for setup.

*If the **“Logo Button”** is breathing WHITE or pulsing RED press the button twice to enter setup mode.*



FIND YOUR SPEAKER

- Open **“Settings”** and press **“Wi-Fi”** connections on your iPhone.
- Choose the **“Libratone”** network.



SETUP YOUR LIBRATONE LIVE OR LOUNGE

- Open **“Libratone”** app, **“Select Speaker”** and press **“Setup”**.
- Type in: **Speaker name**.
- Press **“Wi-Fi Network”**, select your home **Home Wi-Fi network** and enter **Password** (if needed).
- Click **“Apply”**.



RE-CONNECT TO YOUR HOME NETWORK

- Open **“Settings”** and press **“Wi-Fi”** connections on your iPhone.
- Choose your **Home Wi-Fi network**.

Your iPhone may do this automatically.



YOUR SPEAKER IS READY!

If the **“Logo Button”** is breathing WHITE you're alright! And you're ready for AirPlay.

If it emits the WHITE setup sequence or pulsing RED, go to page 11 and start over or visit: www.libratone.com/help for support.



SET YOUR MUSIC FREE

- Select **“Music”** on your iPhone, iPad or iPod touch.
- Press **“AirPlay”** icon.
- Choose your speaker.
- Press **“Play”** and set your music free.



MUSIC ON THE GO - PLAYDIRECT

- Turn on your speaker and **wait 30 sec.** while the **“Logo Button”** is pulsing YELLOW.
- When the **“Logo Button”** emits the WHITE PlayDirect sequence, you're ready to proceed.

*If the **“Logo Button”** is breathing WHITE or pulsing RED press the button twice to enter PlayDirect mode.*



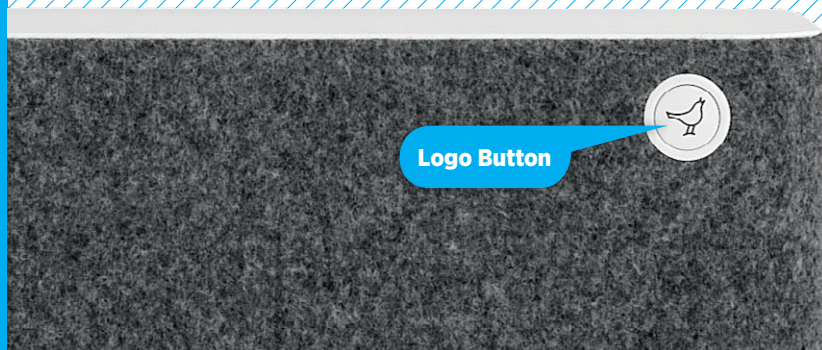
CONNECT TO YOUR SPEAKER

- Open **“Settings”** and press **“Wi-Fi”** connections on your iPhone.
- Choose the **“Libratone”** network.



SET YOUR MUSIC FREE

- Select **“Music”** on your iPhone, iPad or iPod touch.
- Press **“AirPlay”** icon.
- Choose your speaker.
- Press **“Play”** and set your music free.

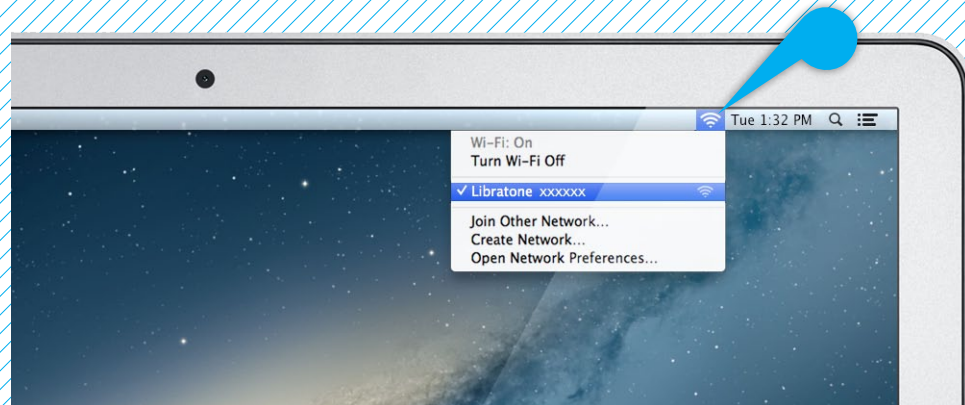


Logo Button

PUT YOUR SPEAKER IN SETUP MODE

- Turn on your speaker and **wait 30 sec.** while the **“Logo Button”** is pulsing YELLOW.
- When the **“Logo Button”** emits the WHITE setup sequence, it's ready for setup.

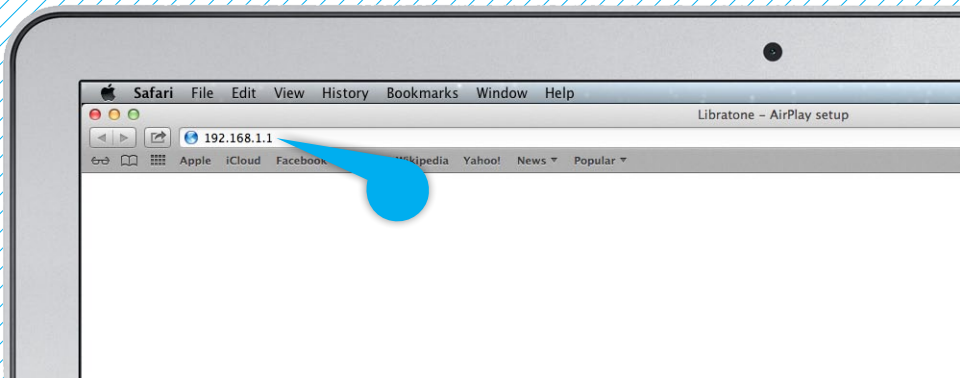
*If the **“Logo Button”** is breathing WHITE or pulsing RED press the button twice to enter setup mode.*



FIND YOUR LIBRATONE SPEAKER NETWORK

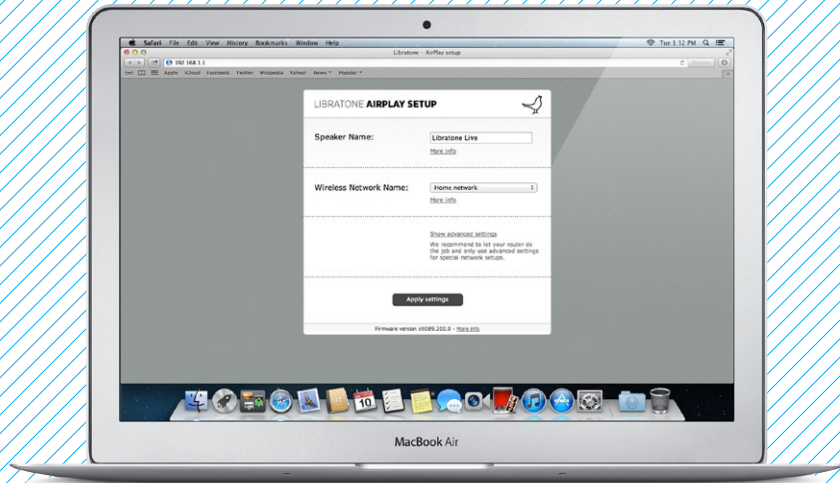
📶 *Make sure your home Wi-Fi is up and running and within range of both your speaker and Mac.*

- Open **“Wi-Fi”** connections on your Mac.
- Choose the **“Libratone”** network.



ENTER YOUR SPEAKER SETUP PAGE

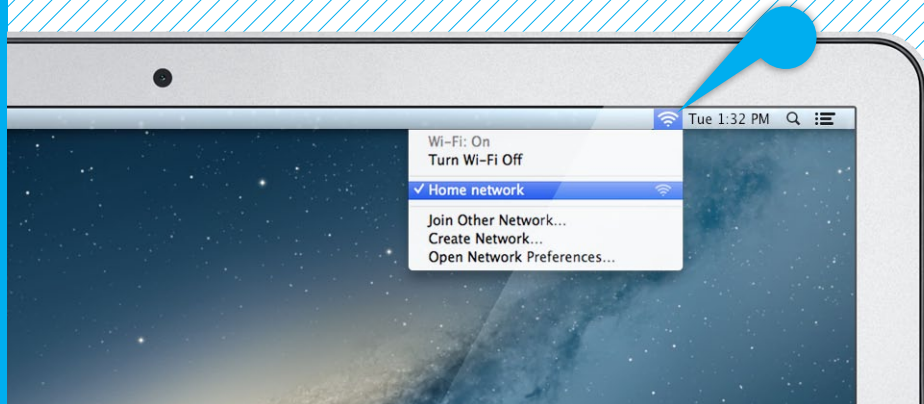
- Open **“Safari”** on your Mac.
- Type **192.168.1.1** in the browser and press **“ENTER”**.



SETUP YOUR SPEAKER

- Type in: **Speaker name**, your **Home Wi-Fi network** and **Password** (if needed).
- Click **“Apply settings”**

Your speaker will now reboot.



CONNECT TO YOUR HOME NETWORK

- Open **“Wi-Fi”** connections on your Mac.
- Choose your **Home Wi-Fi network**.

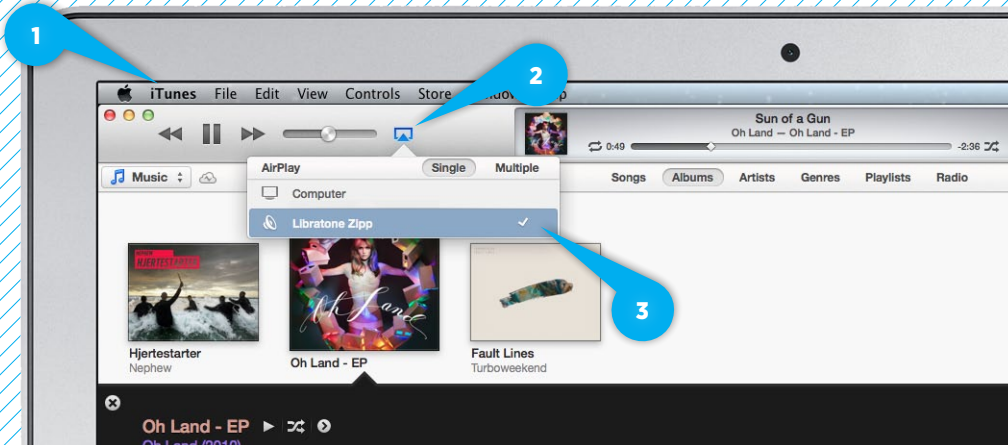
Your Mac may do this automatically.



YOUR SPEAKER IS READY!

If the **“Logo Button”** is breathing WHITE you're alright! And you're ready for AirPlay.

If it emits the WHITE setup sequence or pulsing RED, go to page 20 and start over or visit: www.libratone.com/help for support.



SET YOUR MUSIC FREE

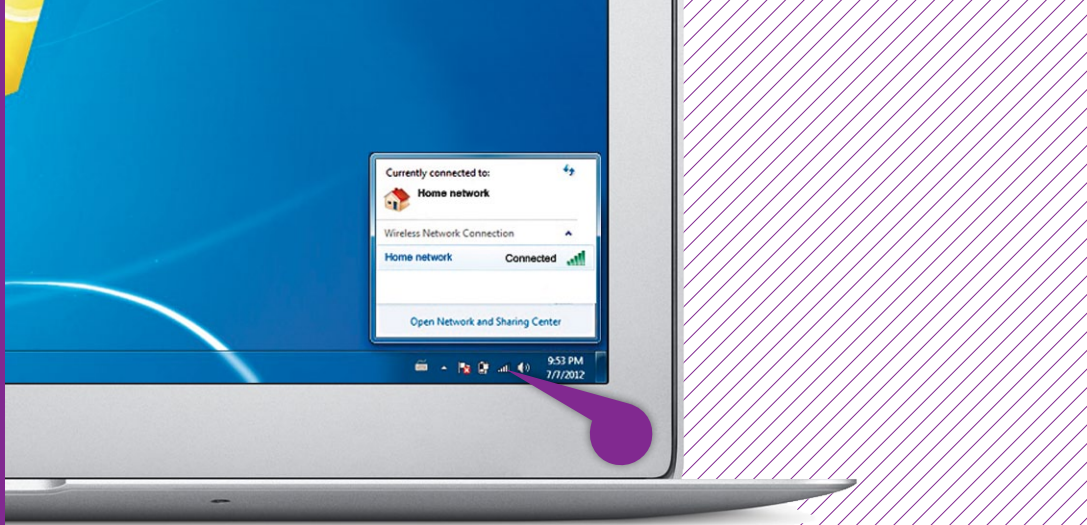
- Open **“iTunes”** on your Mac/PC.
- Click **“AirPlay”** icon and choose your speaker.
- Select **“Play”** and set your music free.



DLNA

Built-in DLNA technology allows you to stream music to your Libratone speaker from most devices using Android, Windows 7 or Windows 8.

For more info go to www.libratone.com/dlna



SETUP AIRPLAY - PC

Setting up AirPlay on PC is almost the same as setting up AirPlay on Mac. Follow the same steps as to setup AirPlay on Mac but be aware that network selection is located differently on Mac and PC.

If you need a full AirPlay setup guide for PC go to www.libratone.com/manual

LIBRATONE APP



Add another dimension to your Libratone speaker by downloading the free Libratone app from Apple's App Store to your iOS device.

The Libratone app keeps your speaker firmware up to date and allows you to customize the sound to your music style and acoustic surroundings - and thereby enhancing the FullRoom experience.





Logo Button

FACTORY RESET

To clear all speaker settings on your Libratone speaker you need to perform a factory reset.

- Hold **“Logo Button”** while powering up the speaker.
- Release the **“Logo Button”** when it turns solid YELLOW.
- After **45 sec.** of pulsing YELLOW the speaker will emit the WHITE setup sequence and enter Setup Mode.

CONNECT AUX

You can connect the old fashioned way as well, by using the 3,5 mini jack/digital mini plug. This is a great way of upgrading the mediocre sound of your TV. You can use both the analog and the digital ports of your TV. We recommend you use the analog connection (‘headphone out’), since this enables you to use your TV remote control to adjust the volume.

If you choose the digital connection, you need to download our app to control the volume. On most Apple products you can adjust the volume directly on the product - also when you use the digital connection.

Oh, by the way - in our world wireless always trumps wires. This means that your wireless streaming overrules the AUX connection. So make sure nothing is streaming, when you want to use AUX.



CLEANING

Your Libratone product is covered in fine Italian wool, so please don't use it as a coffee table. You can use a lint roller to remove lint from the fabric or vacuum at very low power with a special textile brush/head.

COVER CHANGE

Gone are black speaker boxes! Libratone Live and Libratone Lounge comes in all colors of the rainbow. Can't decide on a color? Don't worry! The wool covers are sold separately and can easily be changed.

To buy new speaker covers, please visit our Web Shop at:
www.libratone.com

*When cleaning or changing the cover, **gentle is the name of the game.***

TROUBLESHOOTING

Our hearts and souls are in your Libratone speaker. However, if it's acting up and you can't find your answer here, please visit our support page at:

www.libratone.com/support

REGISTER

To help us give you the best service possible, we encourage you to register your product at:

www.libratone.com/register

WARRANTY

Don't worry. Your Libratone speaker is covered by our warranty. Since the warranty follows national laws, it differs from country to country. For warranty information regarding your country please visit:

www.libratone.com/warranty

Warranty information is occasionally printed on your invoice as well.

TECHNOLOGY

Wireless active speaker with built-in Digital Signal Processing and Digital Amplification. Implements Libratone patent pending FullRoom™ acoustic technology for exceptional sound performance.

WIRELESS

AirPlay lets you stream audio wirelessly from your iPad (3rd generation), iPad 2, iPad, iPhone 4S, iPhone 4, iPhone 3GS, iPod touch (4th and 3rd generations) with iOS 4.3.3 and iTunes 10.2.2 (Mac and PC) or later.

INPUTS

AirPlay, PlayDirect, DLNA and 3.5 mm audio minijack for analog or optical digital sound.

AMPLIFIER POWER

150W total. 1x50W bass, 2x25W midrange, 2x25W tweeter.

DRIVE UNITS

Libratone Live:
1x5" bass, 2x3" midrange and
2x1" ribbon based tweeter.

Libratone Lounge:
1x8" inverted bass, 2x4" ceramic midrange
and 2x1" ribbon based tweeter.

POWER

95-255 Volt AC, 50/60Hz. Power consumption 80/6 W. Energy saving standby power consumption of only 1 W.

DIMENSIONS

Libratone Live:
H: 47 cm / 18.5 in. W: 19.5 cm / 7.7 in.
D: 15 cm / 5.9 in. Weight: 6.5 kg / 14.3 lb.

Libratone Lounge:
H: 23 cm / 9 in. W: 100 cm / 39.4 in.
D: 11 cm / 4.3 in. Weight: 12 kg / 26.5 lb.

U.S. 13

THIS IS IT!
TIME TO SET YOUR
MUSIC FREE
WE WISH YOU
GODSPEED



AirPlay, the AirPlay logo, iPad, iPhone, iPod and iPod touch are trademarks of Apple Inc., registered in the U.S. and other countries. Libratone and FullRoom are registered trademarks of Libratone A/S.

LIBERTY
LIBRATONE

DIFFERENT SPELLING. SAME MEANING.